

Encode® Emergence Healing Abutments

Restorative Procedure

The Encode Impression System provides optimized solutions to clinicians by eliminating the need for implant level impressions, which streamlines the treatment process for the surgeon, restorative clinician and dental laboratory. In addition, patients have a better experience and a beautiful aesthetic outcome. Encode Emergence is a 3-in-1 two-piece healing abutment/scan body/impression coping. When placing the Encode, please ensure that the hex is oriented and engaged prior to driving the screw all the way in for proper seating.

Use the healing abutment as an impression coping or scanbody: Unique codes on the occlusal surface of the Encode Emergence Healing Abutment eliminate the need for swapping it for an impression coping or a scanbody.

Hard and soft-tissue preservation: Keeping the healing abutment instead of swapping components helps preserve tissue resulting in aesthetic outcomes.

Natural emergence profiles:

- More natural tissue healing with gradually rising emergence profiles.
- Bone profiling mitigation when an implant is placed no deeper than 1 mm below the bone crest, supported by a 1mm straight cylinder from the implant platform.
- Available in a range of emergence profiles diameter and in three heights: 3, 5 and 7 mm.

Pink matte appearance for aesthetics and clear scans: The pink matte appearance closely matches the gingiva's color for aesthetics results after surgery and reduces intraoral scan reflection for clear scan images.

Intuitive codes: Code scheme designed for easier interpretation:

- Number of dimples below the straight line on the abutment occlusal indicate platform diameter.
- Number of dimples on the right side of the abutment's occlusal dome indicate abutment height.

Flexible workflows: After taking the impression or scanning the healing abutment, submit the case to a lab of your preference for a final CAD/CAM or Tibase abutment restoration.

Digital Impression with Intraoral Scanner



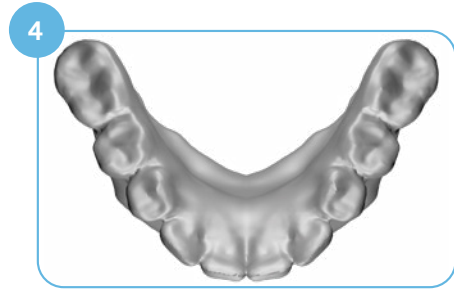
Clean the occlusal surface of the Encode Emergence Healing Abutment from debris.



Scan the Encode Emergence Healing Abutments with an intraoral scanner following the manufacturer's instructions.



Verify that a clear scan has captured all the Encode Emergence Healing Abutment(s) coded occlusal surface, all the soft-tissue contours and the entire circumference of the healing abutment.

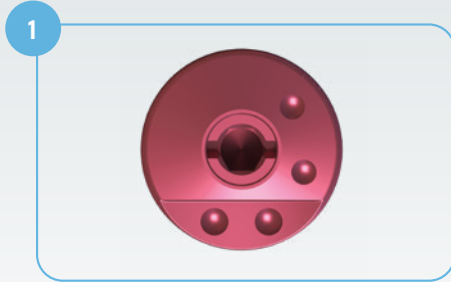


Scan the opposing arch and bite registration.

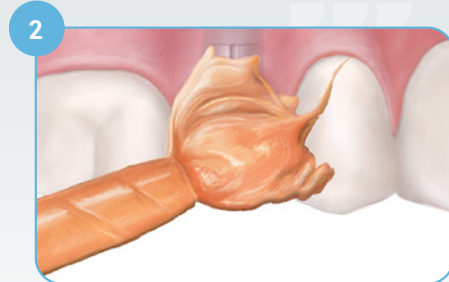
5 Submit scan to your Laboratory.

Encode Emergence Healing Abutments - Restorative Procedure

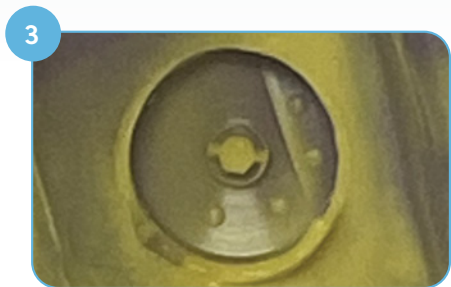
Traditional Impression



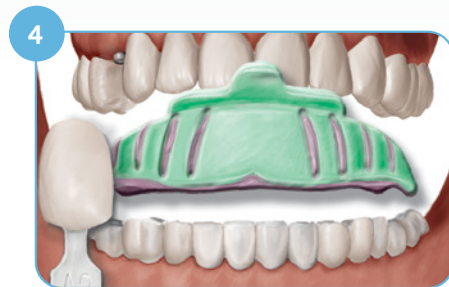
1 Clean the occlusal surface of the Encode Emergence Healing Abutment from debris.



2 Use a light body impression material around the healing abutment(s) and a medium body elastomeric impression material (polyether or polyvinyl) in the impression tray and seat in the mouth.



3 After the impression material has set, remove the tray from the mouth. Verify that a clear impression (no rips, tears, bubbles or distortions) has been made of all the Encode Emergence Healing Abutments coded occlusal surface, the entire circumference of the healing abutment and soft-tissue contours have been captured.



4 Take an impression of the opposing arch and bite registration.

5 Select shade for crown. Disinfect and package the impressions and send to your laboratory for definitive abutment design.

For more information on Encode Healing Abutments contact us at
1-800-342-5454 or visit [ZimVie.com/dental](https://www.ZimVie.com/dental)

ZimVie Dental
4555 Riverside Drive
Palm Beach Gardens, FL 33410
Phone: +1-561-776-6700
Fax: +1-561-776-1272
dentalCS@ZimVie.com

 **ZimVie**
Restoring Daily Life.™

Unless otherwise indicated, as referenced herein, all trademarks and intellectual property rights are the property of ZimVie Inc. or an affiliate; and all products are manufactured by one or more of the dental subsidiaries of ZimVie Inc. (Biomet 3i, LLC, Zimmer Dental, Inc., etc.) and marketed and distributed by ZimVie Dental and its authorized marketing partners. For additional product information, please refer to the individual product labeling or instructions for use. Product clearance and availability may be limited to certain countries/regions. This material is intended for clinicians only and does not comprise medical advice or recommendations. Distribution to any other recipient is prohibited. This material may not be copied or reprinted without the express written consent of ZimVie. ZVINST0006 REV C 10/24 ©2024 ZimVie. All rights reserved.

CE
2797

